

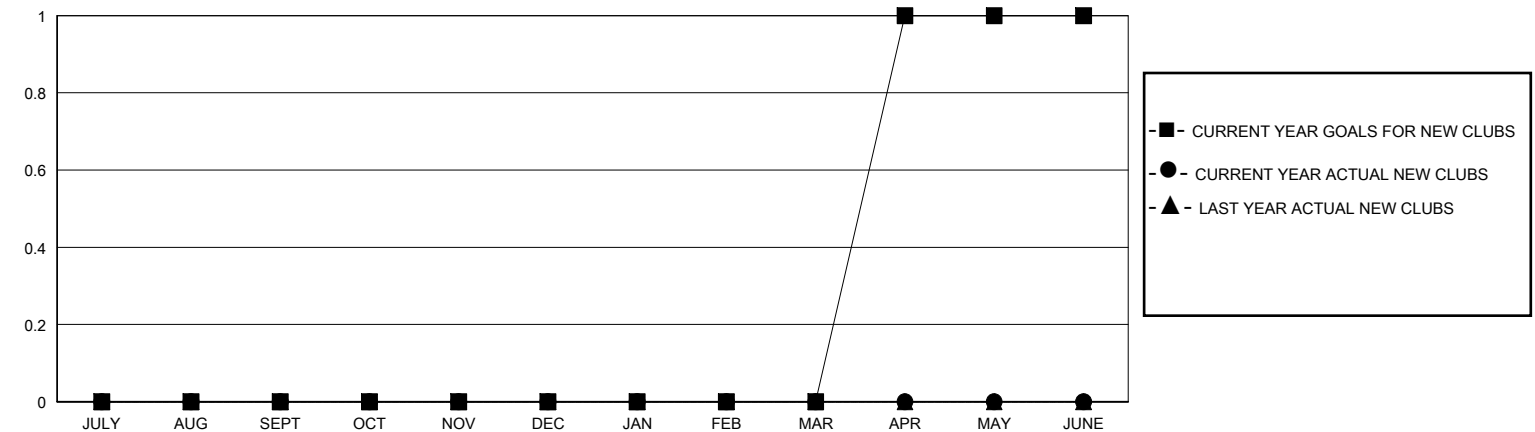
MONTHLY MEMBERSHIP PROGRESS REPORT

District 11 B2

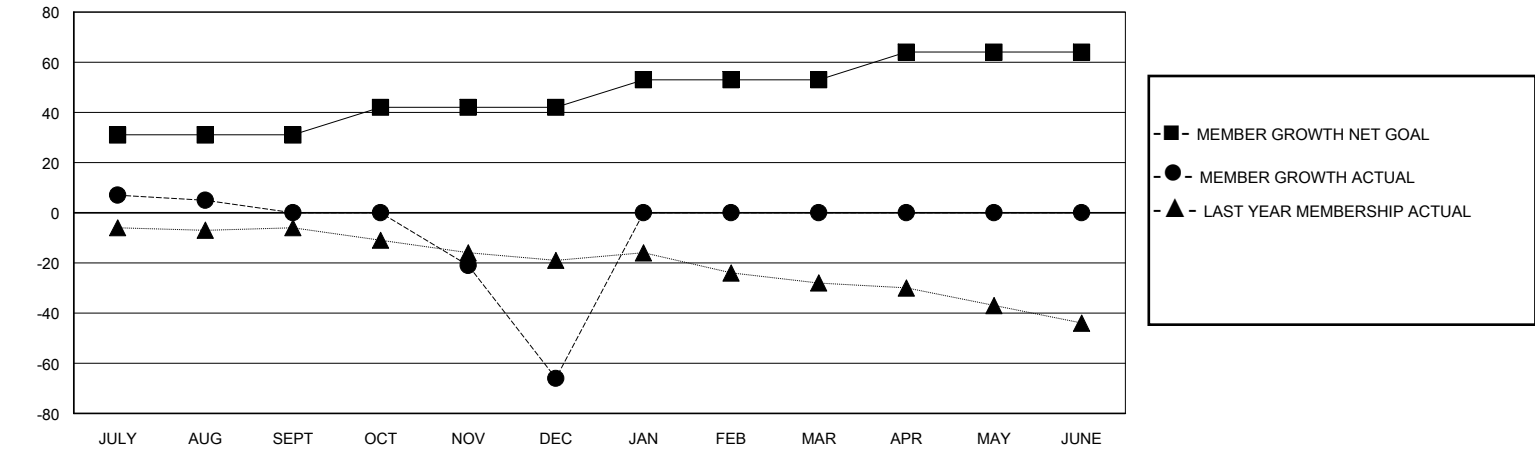
Results as of: 12/31/2025

GMT:				LOCATION MICHIGAN				GMT CA			
Clubs				Members							
RESULTS FOR 2025-2026				RESULTS FOR 2025-2026							
QUARTER	NEW CLUB GOAL	NEW CLUBS	DROPPED CLUBS	QUARTER	MEMBER GROWTH NET GOAL	MEMBER GROWTH ACTUAL	DROPPED MEMBERS ACTUAL (including transfers)				
JULY/AUG/SEPT	0	0	0	JULY/AUG/SEPT	31	18	18				
OCT/NOV/DEC	0	0	3	OCT/NOV/DEC	11	18	81				
JAN/FEB/MAR	0	0	0	JAN/FEB/MAR	11	0	0				
APR/MAY/JUNE	1	0	0	APR/MAY/JUNE	11	0	0				

GOALS AND ACTUAL NEW CLUBS CUMULATIVE



GOALS AND ACTUAL MEMBERS CUMULATIVE



DROPPED CLUBS: 3		14 CLUBS OF 31 ADDED 1 OR MORE NEW MEMBERS	<u>GENDER DISTRIBUTION</u>	
			MALE	457 (64.10%)
			FEMALE	255 (35.76%)
<u>DROPPED MEMBERS</u>		CLICK HERE FOR CUMULATIVE MEMBERSHIP DATA		
DECEASED	7		TOTAL FAMILY UNIT MEMBERS 171	
CLUB CANCELLED	21			
OTHER	71		FAMILY MEMBERS PAYING HALF DUES 87	
TOTAL	99			